



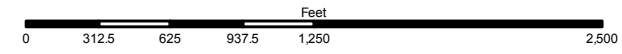
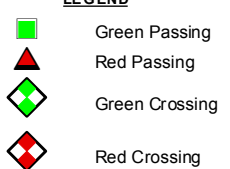
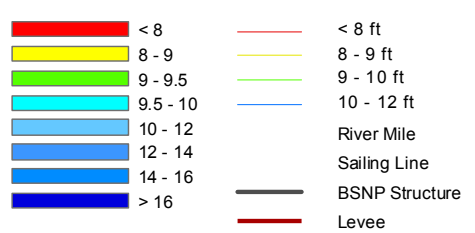
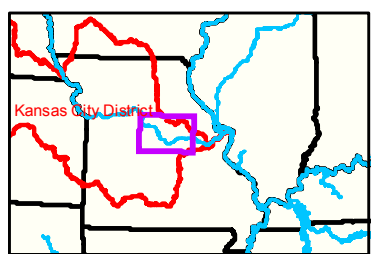
Notes

Callaway County

Osage County

Jefferson City Gage = 6.55 at time of collection 4 November 2020

Gage_L



NOTES:
 Horizontal Coordinate System:
 World Geodetic System of 1984 (WGS84), projected to the
 Universal Transverse Mercator (UTM) Zone 15 North.
 Distance units in U.S. Survey Feet
 Vertical Datum:
 Soundings are shown in feet and indicated depths
 are referenced to water surface at time of collection.
 The information depicted on this map represents the results of a survey
 conducted on the date indicated and can only be considered
 to represent the general condition existing at that time.
 The location of navigation aids are based on and provided by
 the U.S. Coast Guard.

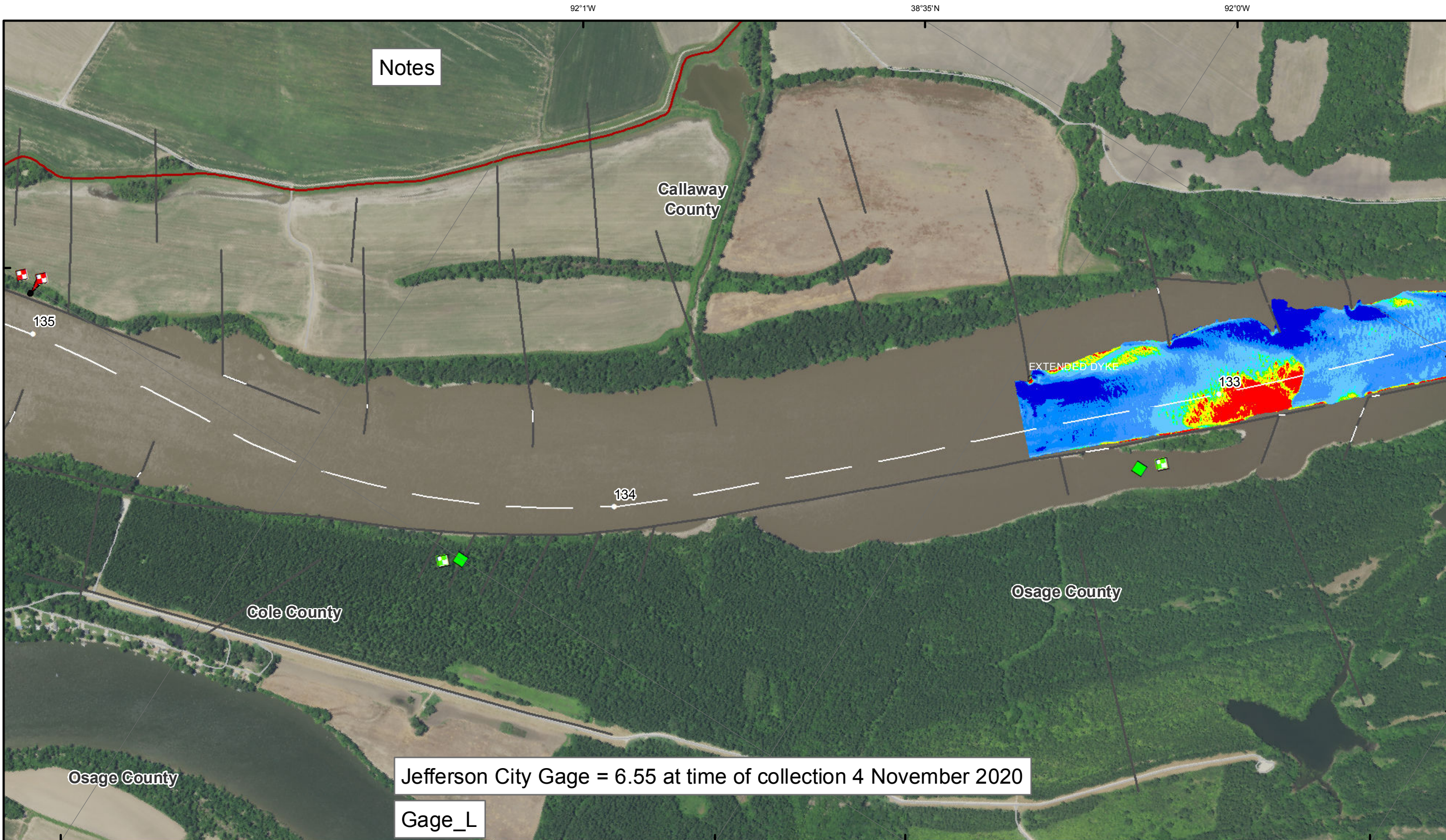


Disclaimer: The United States Government is authorized to reproduce and distribute reprints for government purposes not withstanding any copyright notation that may appear hereon. The U.S. Government makes no warranty, express or implied, of the accuracy or completeness of the information and data furnished. The United States is not liable for any damage or injury resulting from the use of the information and data furnished. The user of this information and data is advised to verify the accuracy of the information and data furnished. The user of this information and data is advised to verify the accuracy of the information and data furnished. The user of this information and data is advised to verify the accuracy of the information and data furnished.

KANSAS CITY DISTRICT MISSOURI RIVER AREA OFFICE	
Surveyed By:	MIRA/O
Reviewed By:	MIRA/O
Checked By:	MIRA/O
Approved:	

Survey Information
 MO_02_LMR
 MO_02_LMRX_20201104_CS_132_5_133_3_SORT
 04 November 2020

Sheet Number
 15 of 46

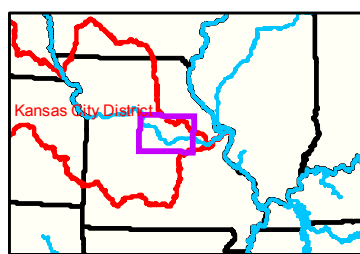


Notes

Jefferson City Gage = 6.55 at time of collection 4 November 2020

Gage_L

EXTENDED DYKE



LEGEND

	< 8		< 8 ft		Green Passing		Green		AIS Green CAN
	8 - 9		8 - 9 ft		Red Passing		Red		AIS Red NUN
	9 - 9.5		9 - 10 ft		Green Crossing		Green CAN		Red NUN
	9.5 - 10		10 - 12 ft		Red Crossing		Junction		
	10 - 12		River Mile						
	12 - 14		Sailing Line						
	14 - 16		BSNP Structure						
	> 16		Levee						

Buoy

	AIS Green CAN
	AIS Red NUN
	Green CAN
	Red NUN

Scale: 0 312.5 625 937.5 1250 2,500 Feet



NOTES:
 Horizontal Coordinate System:
 World Geodetic System of 1984 (WGS84), projected to the
 Universal Transverse Mercator (UTM) Zone 15 North.
 Distance units in U.S. Survey Feet

Vertical Datum:
 Soundings are shown in feet and indicated depths
 are referenced to water surface at time of collection.

The information depicted on this map represents the results of a survey
 conducted on the date indicated and can only be considered
 to represent the general condition existing at that time.

The location of navigation aids are based on and provided by
 the U.S. Coast Guard.



DISCLAIMER: The United States Government is authorized to reproduce and distribute reprints for government purposes not withstanding any copyright notation that may appear hereon. The United States Government does not warrant the accuracy or completeness of the information furnished herein. The United States Government is not liable for any damages resulting from the use of the information furnished herein. The United States Government is not liable for any damages resulting from the use of the information furnished herein. The United States Government is not liable for any damages resulting from the use of the information furnished herein.

KANSAS CITY DISTRICT MISSOURI RIVER AREA OFFICE	
Submitted By:	MIRAO
Reviewed By:	MIRAO
Checked By:	MIRAO
Approved:	

Survey Information

MO_02_LMR
 MO_02_LMRX_20201104_CS_132_5_133_3_SORT
 04 November 2020

Sheet Number
 16 of 46